

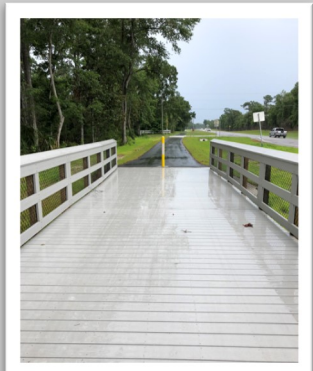
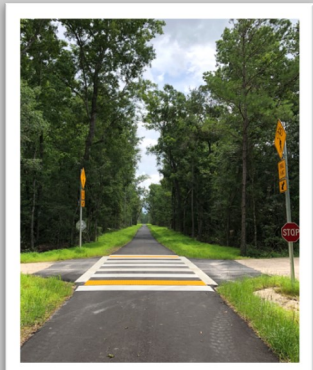
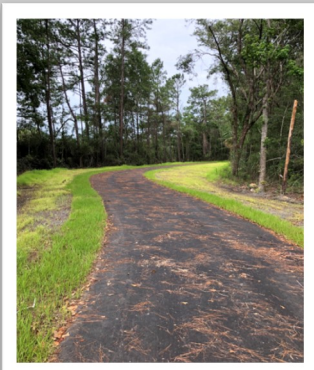


Gortemoller Engineering, Inc.

Land Development • Infrastructure • Transportation

Description of Project

Provided professional engineering services for a 12 mile shared use path facility along SR 30 (US 98) from SR 61 (US 319) to St. Marks Trail in Wakulla County, Florida under **4 separate projects**. Design included Facility Design Plans, along with full roadway, drainage, and survey coordination to verify with FDOT and ADA Standards. Project highlights include pedestrian accommodations.



SR 30 (US 98) Coastal HWY

Shared Use Path from SR 61
(US 319) to St. Marks Trail
Wakulla County, Florida



Project Owner's Information:

FDOT District 3
Jimmy Smith, P.E. (GEC)
850-638-0250

Year Completed:

- 2015 to 2016 - Professional Services
- 2017 - Construction

*Construction Cost: \$5,334,300
(T-3650 = \$3,491,900, T-3651 = \$1,842,400)*

Firms involved with this Project:

- Gortemoller Engineering, Inc.
- Environmental and Geotechnical Specialists
- Alday-Howell Engineering, Inc.
- Carpe Diem Community Solutions
- Kennedy Engineering & Associates
- Jacobs Engineering Group

Gortemoller Engineering, Inc.

708 Thomas Drive
Panama City Beach, Florida 32408
dgortemoller@gorteng.com
www.gorteng.com